



Installation Guide

Z5585
Rev A

REAR SUBFRAME BUSHINGS

PAGE 1 of 4

(Always refer to the current catalogue for complete application listings)

N.B: This installation guide should be used in conjunction with the workshop manual.

Tools Required:

1. 8mm Socket.
2. 13mm Socket.
3. 10mm Socket.
4. 15mm Socket.
5. 21mm Socket.
6. Hammer.
7. Lever Bar.
8. Torque wrench.
9. Air saw or alternatively a Sawzall power saw with a steel cutting blade.
10. Drill & Drill bits.
11. Marker Pen.
12. Jack / Lift.
13. Jack Stands.

Bill Of Materials:

- 2 x 68709 Top Front Mount Synthetic elastomer bushings.
- 2 x 68710 Top Rear Mount Synthetic elastomer bushings.
- 2 x 68711 Bottom Front Mount Synthetic elastomer bushings.
- 2 x 68712 Bottom Rear Mount Synthetic elastomer bushings.
- 4 x 63 Long Steel Tubes.
- 2 x 76 mm Flat Steel Washers.
- 1 x Grease Satchet.

Recomended Additional Component Removal:

To simplify the installation process it is recommended that the rear section of the exhaust is entirely removed from the vehicle.

Removal procedure:

1. Raise the vehicle and support on suitable chassis stands.
2. Remove the two rear road wheels.
3. Using a 15mm wrench loosen the exhaust bolts at the bottom of the header pipes alongside the transmission. (Figure 1.)

Note: The image shown is fitted with an after market performance exhaust and will differ slightly in mounting.

4. Remove the rear exhaust hanger mounting bolts. (Figure 2.)
5. Using a marking pen, place a witness mark on the prop shaft which will enable the shaft to be properly phased to the differential pinion during re-installation. (Figure 3.)
6. Remove the 6 x prop shaft bolts using a 10mm socket. (Figure 3.)

Figure 1

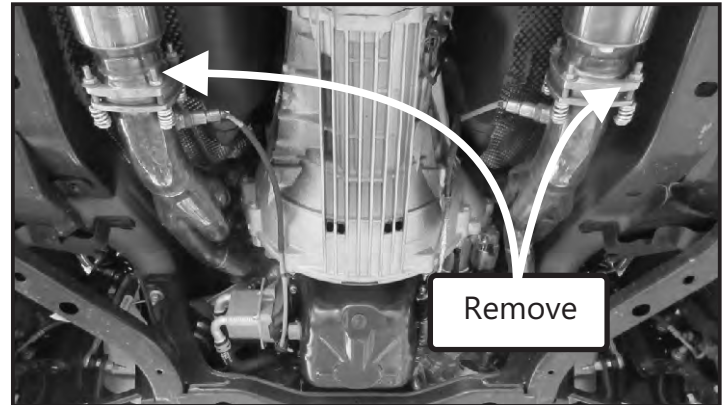


Figure 2

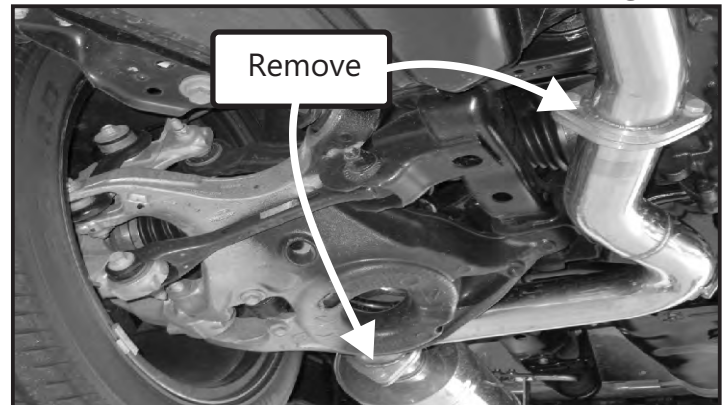
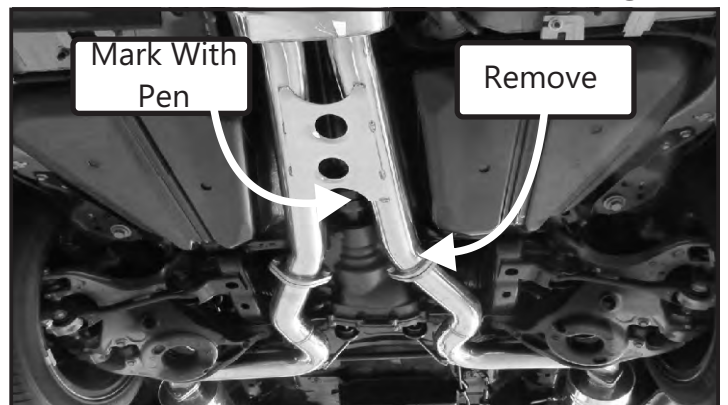


Figure 3



Continued



Installation Guide

Z5585

REAR SUBFRAME BUSHINGS

PAGE 2 of 4

(Always refer to the current catalogue for complete application listings)

N.B: This installation guide should be used in conjunction with the workshop manual.

Continuation

7. Using a 15mm socket, remove the two lower bolts on each damper as indicated. (Figure 4.)
8. Disconnect the differential breather tube from the inlet pipe on the differential rear cover.
9. Using an 8mm and 10mm socket loosen and remove the two bolts that retain the wheel speed sensor and the emergency park brake cables to the rear wheel hub assembly.
10. Remove the two brake caliper bolts from each side of the caliper and wire the calipers up under the wheel hub to prevent them from hanging on the brake hose. (Figure 5.)

Figure 5

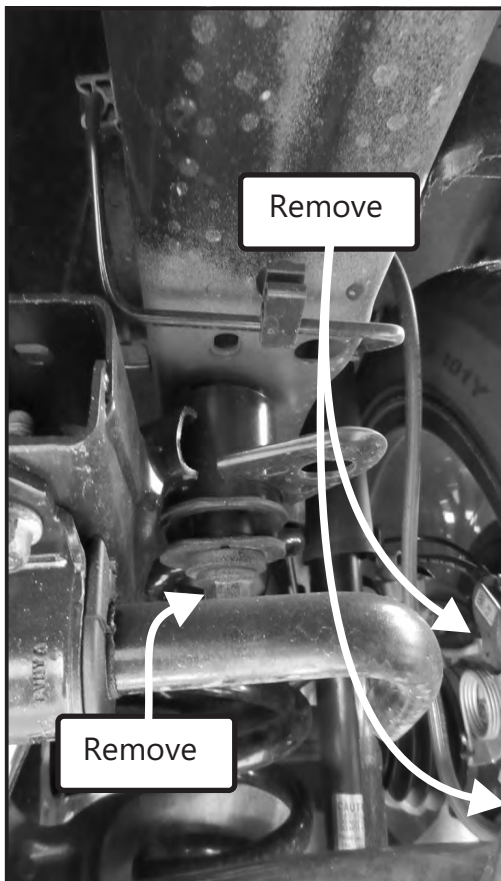
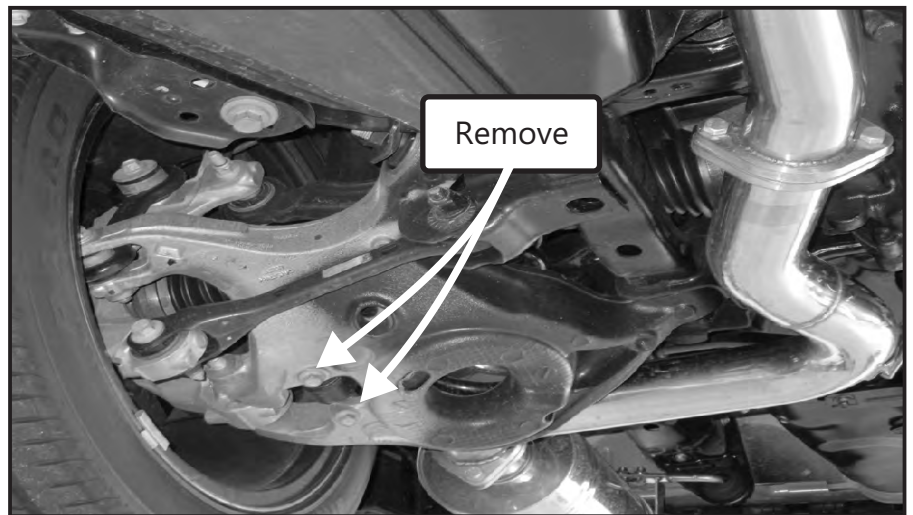
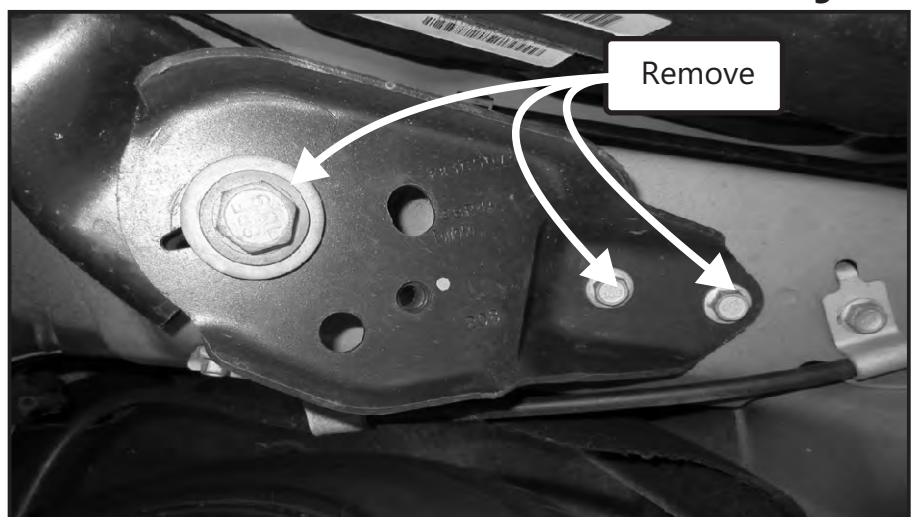


Figure 4



11. Support the sub frame with a jack or transmission stand and using a 13mm socket remove the front sub frame 13mm bolts. There will be four in total to remove from both sides. (Figure 6.)
12. Using the 21mm socket remove the four sub frame support bolts ensuring that the frame is correctly supported. (Figure 5 & 6)
13. Lower the frame onto the floor.

Figure 6





Installation Guide

REAR SUBFRAME BUSHINGS

PAGE 3 of 4

(Always refer to the current catalogue for complete application listings)

N.B: This installation guide should be used in conjunction with the workshop manual.

Continuation

- 14. Using a suitable size drill bit, plunge the drill bit downward through the voiding to make a suitable access path for the sawzall blade to run in. Proceed to cut the OEM rubber bushing steel shell just enough to allow the tension on the shell to release. Take care not to cut into the frame eye.
- 15. Using the hammer tap the OEM rubber bushing out of the frame eye.
- 16. Continue this process for all other frame bushings.
- 17. Once removed clean all the frame eyes and ensure there free of burrs and sharp edges. (Figure 7.)

Figure 7

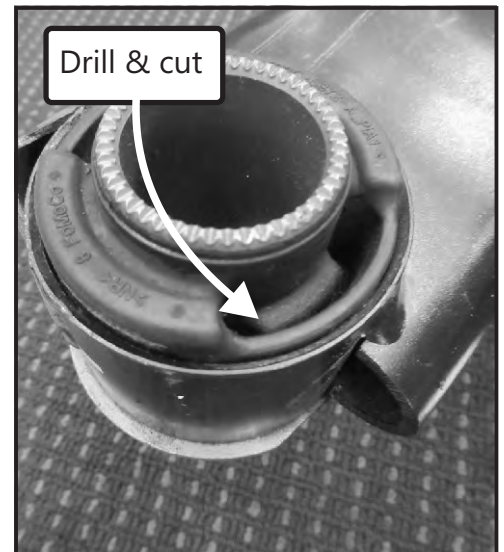


Figure 8

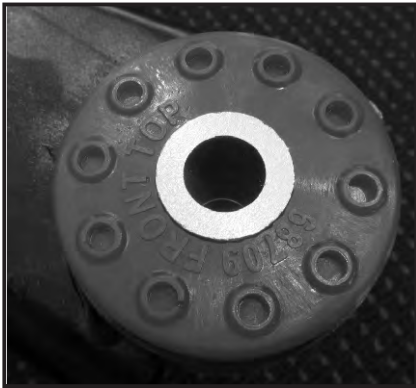


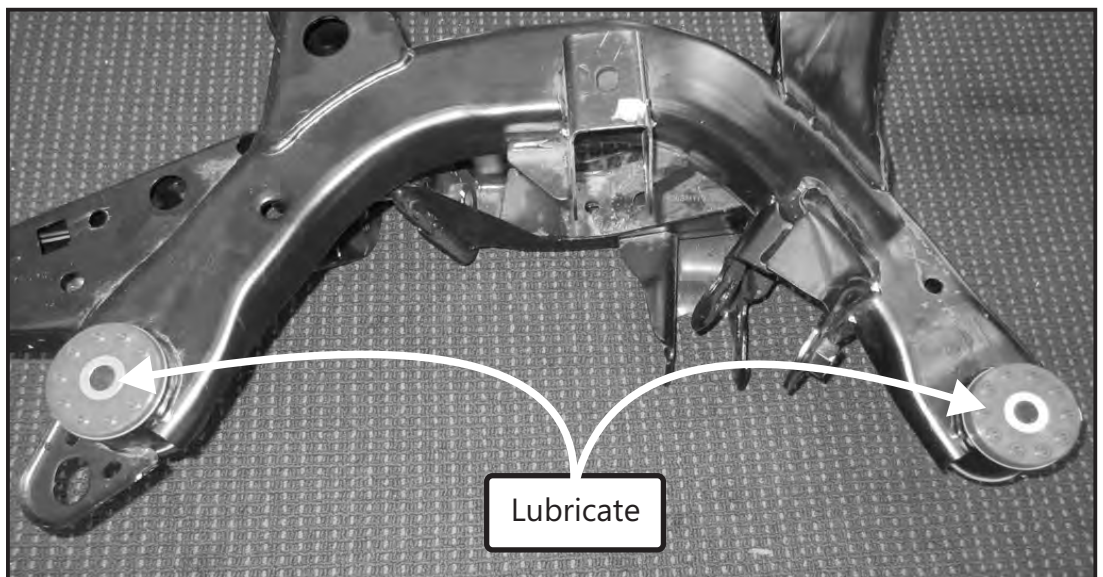
Figure 9



- 18. Install the supplied bushings in their respective order as indicated on the bushing. (Figure 8 & 9)

Figure 10

- 19. Once the bushings are installed, lubricate the bore of the bushings and outside faces with the supplied grease in the kit. (Figure 10.)





Installation Guide

REAR SUBFRAME BUSHINGS

PAGE 4 of 4

(Always refer to the current catalogue for complete application listings)

N.B: This installation guide should be used in conjunction with the workshop manual.

Continuation

20. Re-install the subframe back into the vehicle.
21. When installing the rear bolts use the two supplied washers in the kit. (Figure 11.)
22. The supplied washers are to replace the OEM rubber bushing washers which are fixed as part of the OEM bushing. (Figure 12.)
23. Install the four frame bolts and four 13mm front frame plate bolts. Torque the 21mm cradle bolts to 130 ft/lbs and the 13mm bolts to 39ft/lbs.
24. Re-attach the lower damper bolts and tension to 35 ft/lbs.
25. Re-attach the brake caliper bolts.
26. Re-fit the wheel speed sensor and park brake line bolts.
27. Re-install the prop shaft bolts and torque to 41 ft/lbs.
28. Re-fit the differential breather tube.
29. Install the road wheels and lower the vehicle.
30. Retention all bolts after 60 Miles or 100 Km's

Figure 11

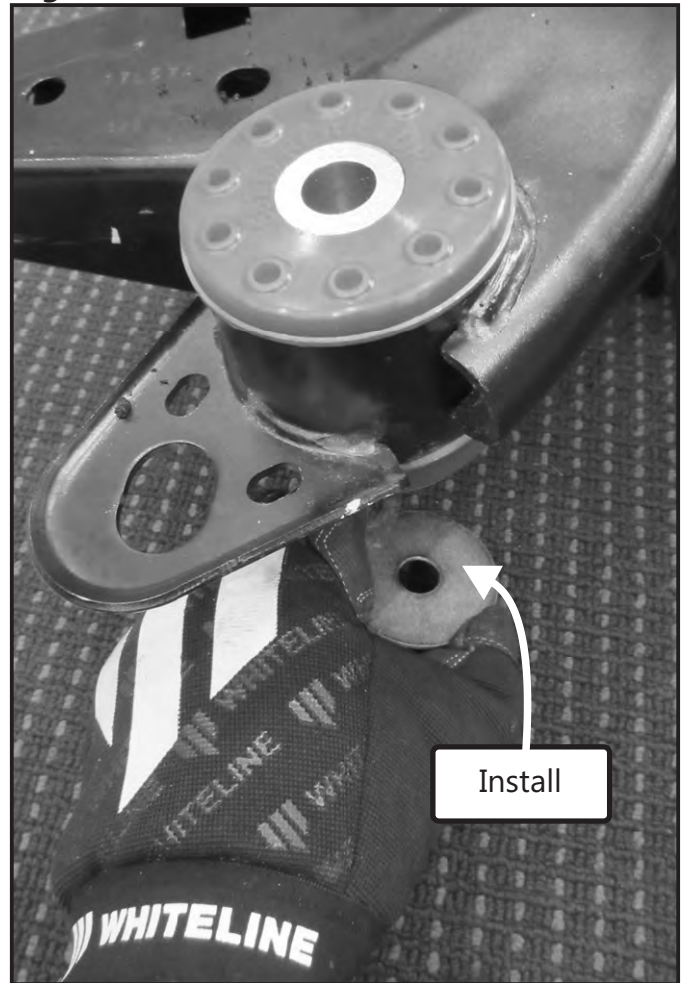


Figure 12

