

Fitting Instructions

Rear Swaybar Kit

Code: Z5581

Application:

Toyota Land Cruiser 79 series

Kit : Rear Swaybar.

Always refer to current catalogue for complete application listing.

Kit Contents

- | | |
|-----------------------------|------------------------|
| 1. 1 x 30mm Swaybar | 7. 10 x spring washers |
| 2. 1 x mounting bracket L/H | 8. 2 x D-bushings |
| 3. 1 x mounting bracket R/H | 9. 2 x bushing saddle |
| 4. 10 x M8 bolts. | 10. 2 x link assembly |
| 5. 10 x flat washers | 11. 1 x grease sachet |
| 6. 4 x 68748 bushings | 12. 2 x crusstubes |

Instructions

1. Reverse vehicle up onto ramps on a flat safe surface.

2. Mount link bracket to the chassis rail using M8 bolts and washers supplied as per figure 1 & 2.

3. Bolt link to mounting bracket using supplied bushings and washers as per figure 1 & 2 and tighten until bushings just start to bulge.

4. Loosely bolt the lower link to the swaybar eyelet.

5. Using the existing mounting platforms, mount the supplied saddle with D bush using supplied M8 bolts and washers as per fig 3.

6. Once installed, make sure the Swaybar is central and there is sufficient clearance from the diff housing, refer figure 3.

7. Tighten all fasteners and lower vehicle.

8. We recommend re checking all hardware after 100kms

Fig 1.

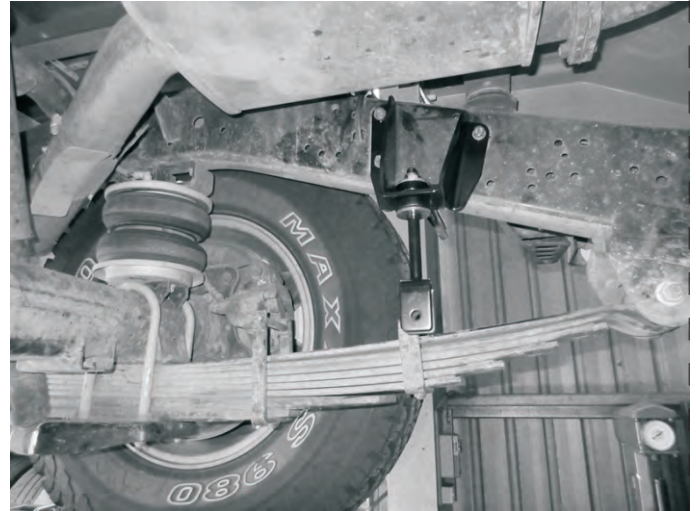


Fig 2.

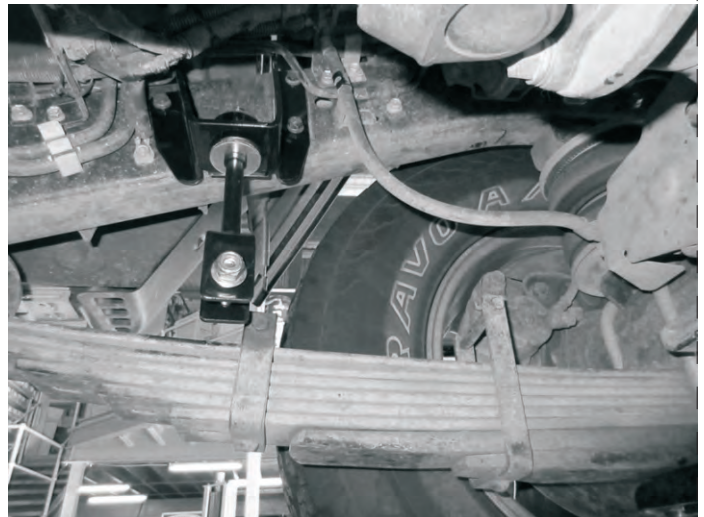
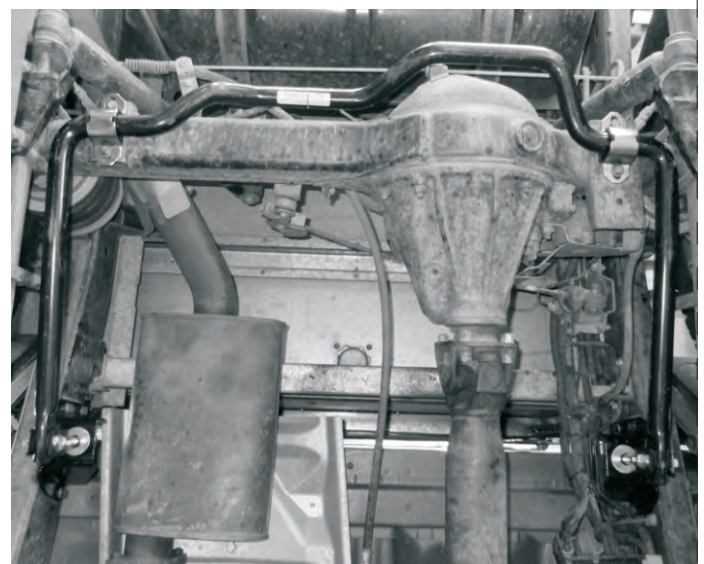


Fig 3.



Warning: Please drive carefully while you accustom yourself to the changed vehicle behaviour.