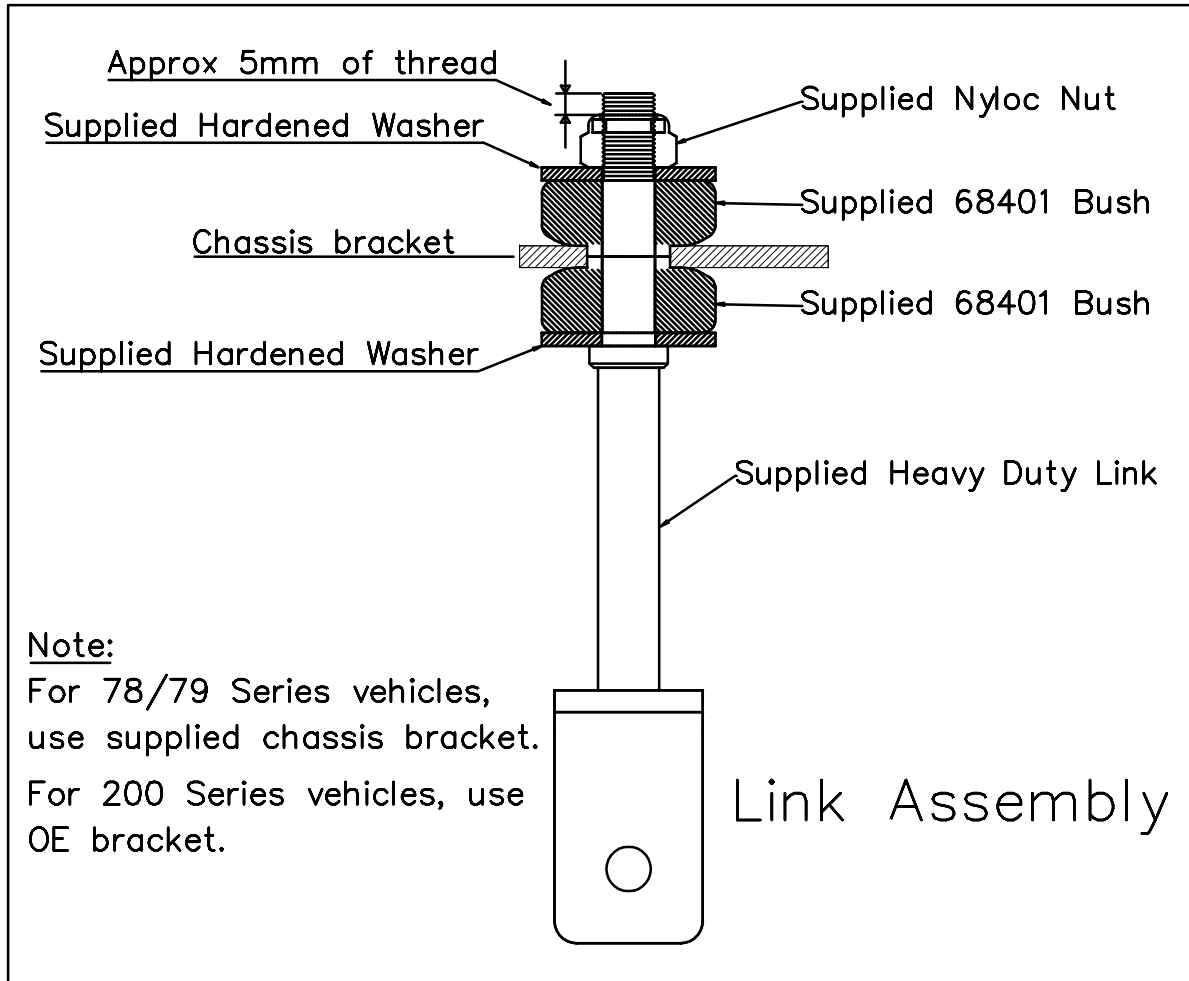


Installation Guide

Rear Sway Bar Link Assembly

Suits : Toyota Landcruiser 78/79 Series
: Toyota Landcruiser 200 Series



Note: Installed Bushing Pre-load

Assemble all supplied components hand tight on the vehicle as seen in the assembly drawing.

With the vehicle at ride height, tighten the nut ONLY 1 FULL TURN to preload the bushes.

There will be approximately 5mm of thread exposed once the nut is tightened.

Incorrect pre-load procedure may result in premature link and/or bushing failure.

N.B. It is recommended that a licenced workshop or trades person carry out the above procedure and that workshop manual and relevant safety procedures are followed in addition to the above.

Fitting Instructions

Rear Swaybar Kit

Z5581
Rev A

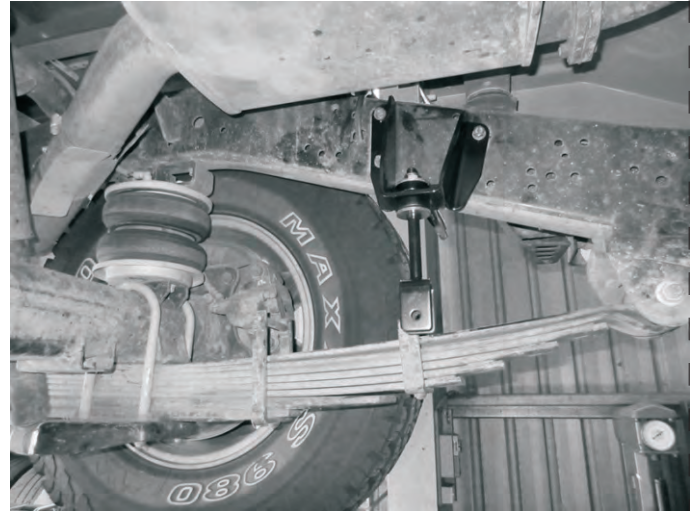
Kit Contents

- | | |
|-----------------------------|------------------------|
| 1. 1 x 30mm Swaybar | 7. 10 x spring washers |
| 2. 1 x mounting bracket L/H | 8. 2 x D-bushings |
| 3. 1 x mounting bracket R/H | 9. 2 x bushing saddle |
| 4. 10 x M8 bolts. | 10. 2 x link assembly |
| 5. 10 x flat washers | 11. 1 x grease sachet |
| 6. 4 x 68748 bushings | 12. 2 x crusstubes |
13. Supplement M8 bolts with welded wire x4

Application:

Toyota Land Cruiser - 78/79 series

Fig 1.



1. Raise vehicle evenly and safely support.

2. Mount link bracket to the chassis rail using M8 bolts and washers supplied as per figure 1 & 2.

NOTE - some late models do not have threaded holes in chassis rail. Use supplied M8 bolts/welded wire and place in factory chassis rail holes from inside.

3. Bolt link to mounting bracket using supplied bushings and washers as per figure 1 & 2 and tighten - refer install guide Z5560.

4. Loosely bolt the lower link to the swaybar eyelet.

5. Using the existing mounting platforms, mount the supplied saddle with D bush using supplied M8 bolts and washers as per fig 3.

6. Once installed, make sure the Swaybar is central and there is sufficient clearance from the diff housing, refer figure 3.

7. Tighten all fasteners and lower vehicle.

8. We recommend re checking all hardware after 100kms

Fig 2.

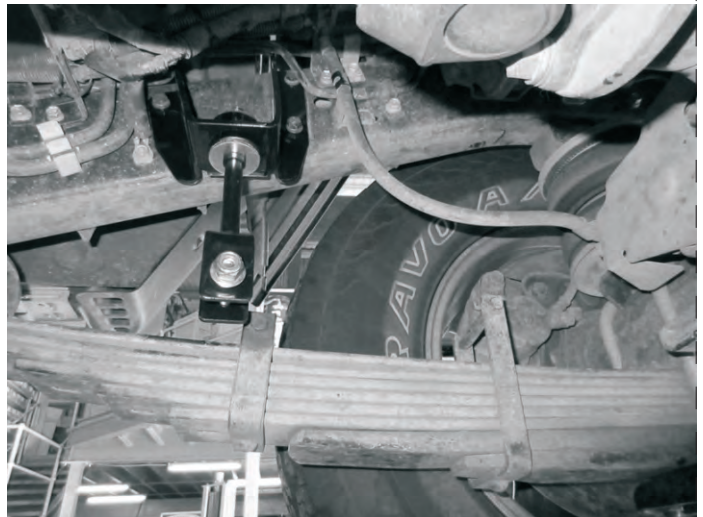
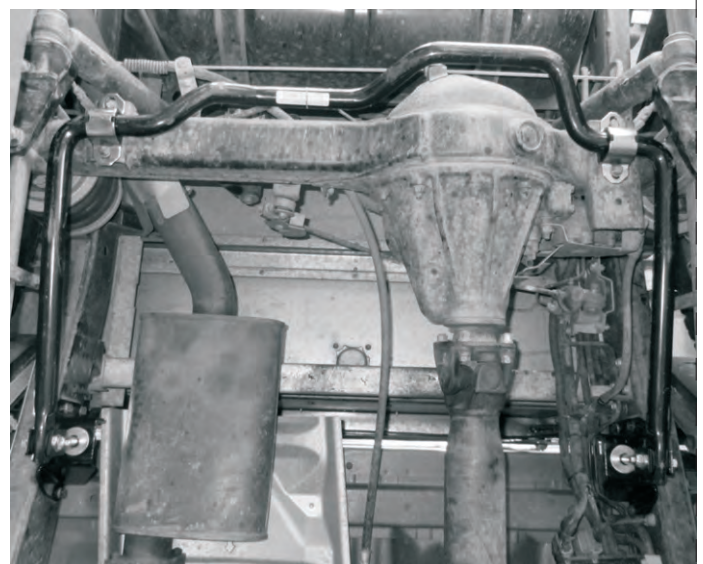


Fig 3.



Warning: Please drive carefully while you accustom yourself to the changed vehicle behaviour.